

# Adult Education Academy

for master's students, doctoral students and practitioners

International and comparative studies  
in adult education and lifelong learning



**5 - 16 February 2024**

in Würzburg/Bavaria, Germany

**#AEAcademyWue**

## In cooperation with



PÉCSI TUDOMÁNYEGYETEM  
UNIVERSITY OF PÉCS

University of Pecs - Hungary



Bayero University Kano -  
Nigeria



Forum  
**Afrikazentrum**  
Universität Würzburg

Africa Center, University of  
Würzburg - Germany



University of Belgrade -  
Serbia



Univerza na Ljubljani  
**FILOZOFSKA  
FAKULTETA**

University of Ljubljana -  
Slovenia



UNIVERSITÀ  
DEGLI STUDI  
FIRENZE

University of Florence - Italy



UNIVERSITÀ  
DEGLI STUDI  
DI PADOVA

University of Padua - Italy



Universidade do Minho

University of Minho -  
Portugal



International Institute of  
Adult and Lifelong  
Education - India



INSTITUTO DE  
EDUCAÇÃO  
ULISBOA

University of Lisbon -  
Portugal



DVV International



EUROPEAN ASSOCIATION FOR  
THE EDUCATION OF ADULTS

European Association for the  
Education of Adults



University of Duisburg-Essen  
- Germany



University of Lagos - Nigeria



University of Delhi

Delhi University - India



HELMUT SCHMIDT  
UNIVERSITÄT

Universität der Bundeswehr Hamburg

Helmut-Schmidt University  
of Hamburg - Germany

## With financial support from



Erasmus+



Human Dynamics Centre

# Index

<b>Structure of the Adult Education Academy .....</b>	<b>04</b>
<b>Week one, 5 - 9 February 2024 .....</b>	<b>06</b>
First week, 5 - 9 February 2024	
Option 1: International strategies in adult education.....	<b>06</b>
Option 2: Paulo Freire, adult and permanent education .....	<b>09</b>
<b>Week two, 12 - 16 February 2024 .....</b>	<b>12</b>
Second week, 12 - 16 February 2024	
Comparative studies in adult education and lifelong learning .....	<b>12</b>
Comparative groups overview .....	<b>17</b>
Comparative groups moderators.....	<b>18</b>
<b>Certification and follow-up .....</b>	<b>24</b>
<b>Join us on social media .....</b>	<b>25</b>
<b>Travel &amp; Venue.....</b>	<b>26</b>
<b>Accommodation .....</b>	<b>28</b>
<b>Key .....</b>	<b>28</b>
<b>Which platforms are used? .....</b>	<b>29</b>
<b>Team of the Adult Education Academy .....</b>	<b>30</b>

# Structure of the Adult Education Academy

Since 2014, the Adult Education Academy promotes international networks in adult education and lifelong learning, aiming to foster a connection between academic learning and the field of adult education.

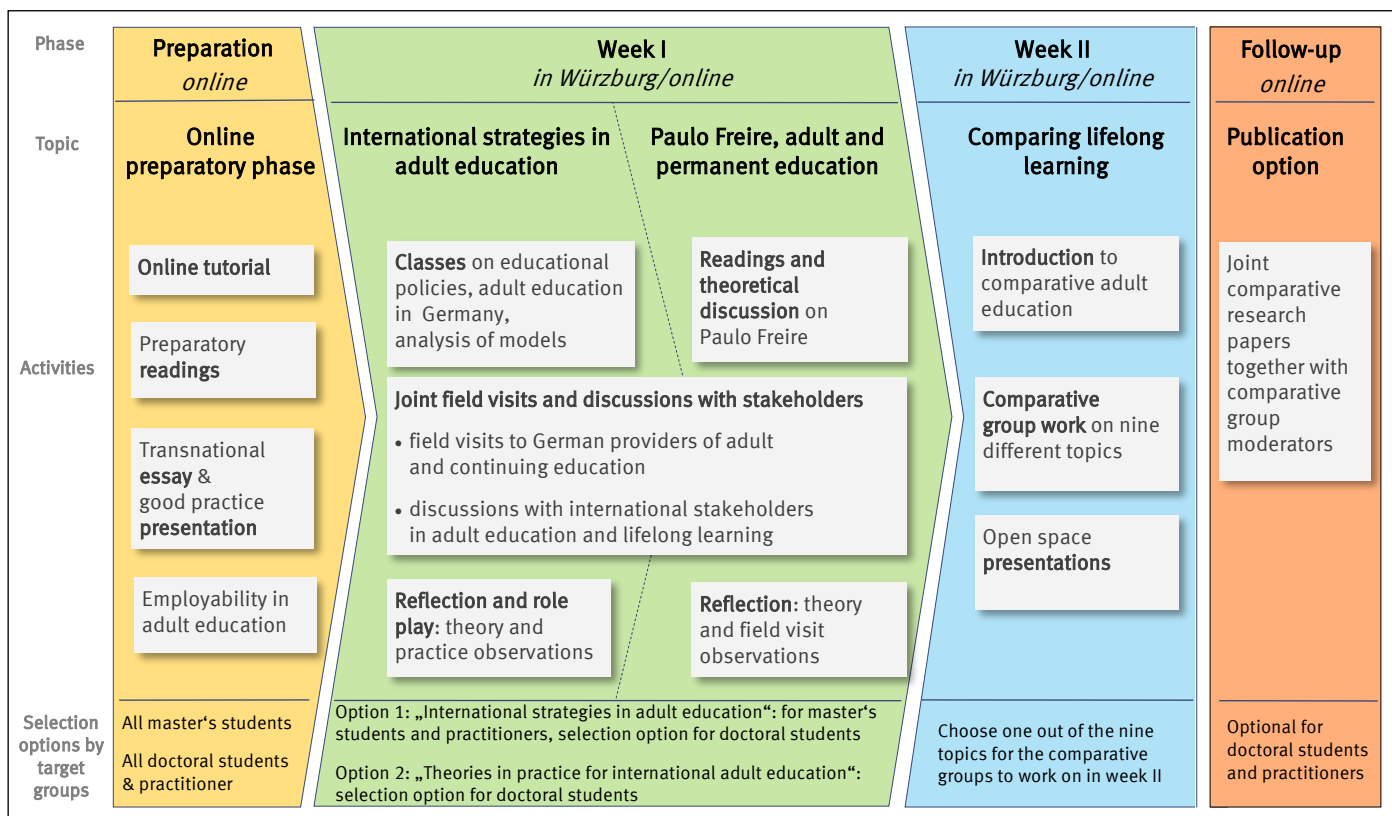
During the preparatory phase and the two-week intensive programme, participants develop and refine their analytical and comparative skills in adult education in an international environment. They gain an understanding of internationally relevant educational policies in the context of lifelong learning, while strengthening their communication, teambuilding and critical thinking skills by working together in this international setting.

## Target groups

Master's and doctoral students in adult education, as well as colleagues from the field of adult education and lifelong learning (hereafter "practitioners") are invited to join the Adult Education Academy in Würzburg. Practitioners should have experiences in adult education (e.g. teaching, programme planning, management in institutions of adult education associations). As a minimum requirement, all participants should hold a bachelor's degree (or equivalent) in a subject related to adult and lifelong learning.

## Structure

The Adult Education Academy is divided into an (1) online preparatory phase, (2) a two-week intensive programme featuring (2.1) the first week 5-9 February 2024 & (2.2) the second week from 12-16 February 2024 in a hybrid mode (3) and an optional follow-up. The two-week intensive programme will be organised online and on campus in Würzburg.





## Preparatory phase

The preparatory phase is essential for participation in the Adult Education Academy. It provides participants with the necessary knowledge and abilities for the two-week Adult Education Academy programme in February 2024. The preparatory phase, which begins in November 2023 and ends in January 2024, can be divided into three parts. During the first part, participants are divided into two groups: one consisting of master's students and practitioners and another consisting of doctoral students. The master's students and practitioners will address the topic "International strategies in adult education", whereas the doctoral students can decide whether they want to join the same group or rather work on the topic "Paulo Freire, adult and permanent education". The second part takes place within the comparative groups. Last but not least, the third part addresses employability in adult education.

The preparation will take place online. Materials provided during this phase include an online tutorial, readings and group sessions for discussions. At the end of the preparatory phase, master's and doctoral students submit a transnational essay; practitioners submit a good practice presentation. The topics of the essays will depend on the comparative groups chosen by the participants. Central to the successful completion of the Adult Education Academy is the active cooperation and independent preparation of the contents and materials in the preparation phase by the participants for the two-week intensive programme in February.



## Week I

The group "International policies in adult education and lifelong learning" (for master's and doctoral students as well as practitioners) will focus on a critical reflection of current education policies based on a theoretical model developed by Lima/Guimarães.

The option "Paulo Freire, adult and permanent education" (for doctoral students) is based on readings and discussions of selected texts by Paulo Freire.

During the first week of the Adult Education Academy, doctoral students have the opportunity to take a class on Paulo Freire's theories for "adult and permanent education". This class is based on readings and discussions of selected texts by Paulo Freire. The doctoral students will develop a theoretical-analytical perspective and will focus on more specialised theoretical knowledge to be able to synthesise different perspectives systematically and theoretically. If they prefer, doctoral students may also join the master's students and practitioners in the class on "International strategies in adult education".

The theoretical insights in both groups (International policies in adult education and lifelong learning & Paulo Freire, adult and permanent education) will be accompanied by field visits to adult education providers in and around Würzburg. Furthermore, presentations of international adult education associations (European Association for the Education of Adults, International Council in Adult Education, DVV International) are organised to serve as case studies for practicing the analytical models or the theories discussed in the two classes.



## Week II

During the second week, the participants will work in comparative groups divided by nine different topics in adult education and lifelong learning. Participants will choose the topic of their transnational essay based on the focus of the comparative group they will be assigned to prior to the Academy. On the last day of the Adult Education Academy, the results of the comparisons will be presented to all other groups.



## Certification and follow-up

After participating fully in the Adult Education Academy and submitting either a transnational essay or a good practice presentation, all participants receive a participation certificate. In addition, there are two possibilities for enrolled students to receive ECTS credits. For more information, see page 24.

Doctoral students and practitioners have the possibility to get guidance for publishing a joint comparative paper after the Adult Education Academy.

## Week I: International strategies in adult education



Master's students, doctoral students and practitioners working on "International strategies in adult education and life-long learning" in the first week of the Adult Education Academy will use a policy analysis perspective. This perspective will enhance their analytical skills by integrating and analysing different perspectives. The theoretical analysis perspective is accompanied by field visits to adult education providers in and around Würzburg. Presentations of international adult education organisations (EAEA, ICAE, DVV International) will complete the programme. These insights will be applied to the analytical models as case studies.

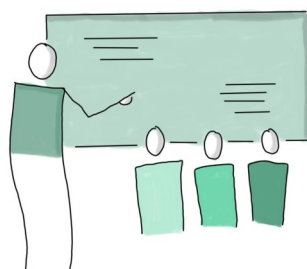
Participants who choose this topic will be divided in two groups. These group arrangements are not identical to the comparative groups. Each group will be assigned a course room. Prof. Egetenmeyer and Prof. Guimarães will be rotating to lead the groups.

### Room overview for the Groups A & B of international strategies in adult education

Strategies Group A   Room: Z6, 2.007	AEA-Team Office   Room: Z6, 2.010
Strategies Group B   Room: Z6, 2.011	

### Monday, 5 February 2024

		Room
8.00-9.00	Registration	Z6, 1.012
9.15-10.30	Introduction and welcoming address PROF. FRANK SCHWAB - ACADEMIC DEAN, FACULTY OF HUMAN SCIENCES, JULIUS-MAXIMILIANS UNIVERSITY WÜRZBURG PROF. EGETENMEYER - UNIVERSITY PROFESSOR, PROFESSORSHIP FOR ADULT AND CONTINUING EDUCATION, JULIUS-MAXIMILIANS UNIVERSITY OF WÜRZBURG	Z6, 1.012 PLENARY ZOOM ROOM
10.30-11.00	<i>Coffee break</i>	
11.00-12.15	Get to know each other	BEU LEIBINGER SAAM Z6, 1.012 PLENARY ZOOM ROOM
12.15-12.30	Joint group photo	Z6, 1.012
12.30-13.30	<i>Lunch break</i>	
13.30-15.00	Plenary lecture: The politicity of education: politics, policies, strategies— Introducing Paulo Neves Reglus Freire (1921-1997): Biography and bibliography	PROF. LIMA Z6, 1.012 PLENARY ZOOM ROOM
15.00-15.30	<i>Coffee break</i>	
15.30-17.00	Plenary lecture: The politicity of education: politics, policies, strategies— Introducing Paulo Neves Reglus Freire (1921-1997): Biography and bibliography	PROF. LIMA Z6, 1.012 PLENARY ZOOM ROOM
18.00	Guided City Tour	TO BE ANNOUNCED






## Week I: International strategies in adult education



### Tuesday, 6 February 2024

		Room	
9.00-10.30	<b>Group A:</b> Levels of an analysis: "Mega, macro, meso and micro" <b>Group B:</b> Adult education providers in Germany	PROF. GUIMARÃES PROF. EGETENMEYER	Z6, 2.007 Z6, 2.011
10.30-11.00	<i>Coffee break</i>		
11.00-12.30	<b>Group A:</b> Levels of an analysis: "Mega, macro, meso and micro" <b>Group B:</b> Adult education providers in Germany	PROF. GUIMARÃES PROF. EGETENMEYER	Z6, 2.007 Z6, 2.011
12.30-13.30	<i>Lunch break</i>		
13.30-15.00	<b>Group A:</b> Social policy models <b>Group B:</b> Social policy models	PROF. GUIMARÃES PROF. LIMA	Z6, 2.007 Z6, 2.011
15.00-15.15	<i>Coffee break</i>		
15.15.-17.00	<b>Group A:</b> Social policy models <b>Group B:</b> Social policy models	PROF. GUIMARÃES PROF. LIMA	Z6, 2.007 Z6, 2.011

### Wednesday, 7 February 2024

		Room	
9.00-10.30	<b>Group A:</b> Adult education providers in Germany <b>Group B:</b> Preparation for field visits	PROF. EGETENMEYER PROF. GUIMARÃES	Z6, 2.007 Z6, 2.011
10.30-11.00	<i>Coffee break</i>		
11.00-12.30	<b>Group A:</b> Adult education providers in Germany <b>Group B:</b> Monitoring the Marrakesh Framework for Action	PROF. EGETENMEYER DR. VALDES COTERA	Z6, 2.007 Z6, 2.011
12.30-13.30	<i>Lunch break</i>		
13.30-14.40	<b>Group A:</b> Preparation for field visits <b>Group B:</b> Peace - in the Contexts of Citizenship Education (CE) and Education for Sustainable Development (ESD)	PROF. GUIMARÃES PROF. HINZEN	Z6, 2.007 Z6, 2.011
14.40-15.00	<i>Bus ride with the busses 214, 114 or 14 at 14.57, 15.08 or 15.06 from the bus stop philosophic institute ("Philosophisches Institut")</i>		
<b>ALL Groups:            Field visits to providers of adult and continuing education in Würzburg</b>			
15.30-17.00	 Volkshochschule (Adult Education Centre) Würzburg and Surroundings e.V., Würzburg Meeting point: Z6 2nd floor at 14.50	PROF. GUIMARÃES	PLENARY ZOOM ROOM
	 Kolping Academy Mainfranken, Würzburg Meeting point: Z6 1st floor at 14.50	PROF. EGETENMEYER	
	 Domschule Academy, Würzburg Meeting point: Z6 ground floor at 14.50	BEU	

## Week I: International strategies in adult education



### Thursday, 8 February 2024

		Room	
9.00-10.00	<b>Group A:</b> Monitoring the Marrakesh Framework for Action <b>Group B:</b> Levels of an analysis: "Mega, macro, meso and micro"	DR. VALDES COTERA Z6, 2.007 PROF. GUIMARÃES Z6, 2.011	
10.00-10.30	<i>Coffee break</i>		
10.30-11.45	<b>Group A:</b> Peace - in the Contexts of Citizenship Education (CE) and Education for Sustainable Development (ESD) <b>Group B:</b> Levels of an analysis: "Mega, macro, meso and micro"	PROF. HINZEN Z6, 2.007 PROF. GUIMARÃES Z6, 2.011	
12.00-14.00	<i>Bus ride to Frankfurt &amp; Nürnberg</i>		
<b>ALL GROUPS: Field visits to adult education providers beyond Würzburg</b>			
14.00-16.00	<input checked="" type="radio"/> Deutsche Bahn (German railway), Frankfurt Meeting point: Z6, 2nd floor at 12.00	PROF. LIMA	ZOOM ROOM TO BE ANNOUNCED
	<input type="radio"/> Gewerkschaft Erziehung und Wissenschaft (Union Education and Science), Frankfurt Meeting point: Z6, 1st floor at 12.00	PROF. GUIMARÃES	
	<input type="radio"/> Volkshochschule (Adult Education Centre), Nürnberg Meeting point: Z6, ground floor at 12.00	PROF. EGETENMEYER	
16.00-18.30	<i>Free time in Frankfurt &amp; Nürnberg</i>		
18.30	<i>Bus ride back to Würzburg</i>		

### Friday, 9 February 2024

		Room	
9.00-10.30	<b>Group A:</b> Role play: Social policy models and adult education practice <b>Group B:</b> Role play: Social policy models and adult education practice	PROF. EGETENMEYER Z6, 2.007 PROF. GUIMARÃES Z6, 2.011	
10.30-11.00	<i>Coffee break</i>		
11.00-12.30	<b>Group A:</b> Role play: Social policy models and adult education practice <b>Group B:</b> Role play: Social policy models and adult education practice	PROF. EGETENMEYER Z6, 2.007 PROF. GUIMARÃES Z6, 2.011	
12.30-13.30	<i>Lunch break</i>		
<b>ALL GROUPS: Field visits to international adult and continuing education associations</b>			
13.30-15.00	<input checked="" type="radio"/> <i>Esther Hirsch</i> — The role of Adult Education in International Development Cooperation - Position and strategies of DVV International (DVV International)	PROF. EGETENMEYER	Z6, 2.007 ZOOM ROOM STRATEGIES A
	<input checked="" type="radio"/> <i>Gina Ebner</i> — Herding cats: European advocacy for adult learning and education (EAEA)	PROF. GUIMARÃES	Z6, 2.011 ZOOM ROOM STRATEGIES B
	<input checked="" type="radio"/> <i>Katarina Popović</i> — Global governance in adult education policy - changes and perspectives (ICAE)	PROF. LIMA	Z6, 1.004 ZOOM ROOM
15.00-15.30	<i>Coffee break</i>		
15.30-17.00	<b>Group A:</b> Reflection of field visits <b>Group B:</b> Reflection of field visits	PROF. EGETENMEYER Z6, 2.007 PROF. GUIMARÃES Z6, 2.011	



## Week I: Paulo Freire, adult and permanent education



In this heavily theory-based class for doctoral students, the participants focus on Paulo Freire's theories for international adult education. The participants will develop a theoretical-analytical perspective.

They will focus on much more specialised theoretical knowledge to be able to synthesise different perspectives systematically and theoretically. The theoretical insights during the first week are accompanied by field visits to adult education providers in and around Würzburg. Furthermore, presentations of international adult education associations are organised (e.g. EAEA, ICAE, DVV International).

### Room overview for the Group Paulo Freire, adult and permanent education

Group Freire   Room: Z6, 1.004   Zoom Room Freire	AEA-Team Office   Room: Z6, 2.010
---	-----------------------------------

### Monday, 5 February 2024

			Room
8.00-9.00	Registration		Z6, 1.012
9.15-10.30	Introduction and welcoming address PROF. FRANK SCHWAB - ACADEMIC DEAN, FACULTY OF HUMAN SCIENCES, JULIUS-MAXIMILIANS UNIVERSITY WÜRZBURG PROF. EGETENMEYER - UNIVERSITY PROFESSOR, PROFESSORSHIP FOR ADULT AND CONTINUING EDUCATION, JULIUS-MAXIMILIANS UNIVERSITY OF WÜRZBURG		Z6, 1.012 PLENARY ZOOM ROOM
10.30-11.00	<i>Coffee break</i>		
11.00-12.15	Get to know each other	BEU LEIBINGER SAAM	Z6, 1.012 PLENARY ZOOM ROOM
12.15-12.30	Joint group photo		Z6, 1.012
12.30-13.30	<i>Lunch break</i>		
13.30-15.00	Plenary lecture: The politicity of education: politics, policies, strategies—Introducing Paulo Neves Reglus Freire (1921-1997): Biography and bibliography	PROF. LIMA	Z6, 1.012 PLENARY ZOOM ROOM
15.00-15.30	<i>Coffee break</i>		
15.30-17.00	Plenary lecture: The politicity of education: politics, policies, strategies—Introducing Paulo Neves Reglus Freire (1921-1997): Biography and bibliography	PROF. LIMA	Z6, 1.012 PLENARY ZOOM ROOM
18.00	Guided City Tour		TO BE ANNOUNCED

### Tuesday, 6 February 2024

			Room
9.00-10.30	Why studying Freire today? The contributions of Freire to policy studies in ALE/LLL: critical encounters with Ettore Gelpi and Ivan Illich	PROF. LIMA	Z6, 1.004
10.30-11.00	<i>Coffee break</i>		
11.00-12.30	Why studying Freire today? The contributions of Freire to policy studies in ALE/LLL: critical encounters with Ettore Gelpi and Ivan Illich	PROF. LIMA	Z6, 1.004
12.30-13.30	<i>Lunch break</i>		
13.30-15.00	Adult education providers in Germany	PROF. EGETENMEYER	Z6, 1.004
15.00-15.30	<i>Coffee break</i>		
15.30-17.00	Group work on Freire		Z6, 1.004

## Week I: Paulo Freire, adult and permanent education



Wednesday, 7 February 2024			Room
9.00-10.30	The opus magnum: the pedagogy of the oppressed and its main concepts. Radical democracy, liberation and participation; modernization and development. Extension or communication? Education as the practice of freedom.	PROF. LIMA	Z6, 1.004
10.30-11.00	<i>Coffee break</i>		
11.00-12.30	The opus magnum: the pedagogy of the oppressed and its main concepts. Radical democracy, liberation and participation; modernization and development. Extension or communication? Education as the practice of freedom.	PROF. LIMA	Z6, 1.004
12.30-13.30	<i>Lunch break</i>		
13.30-14.40	Revisiting the pedagogy of the oppressed to analyse adult learning and education	PROF. LIMA	Z6, 1.004
14.40-15.00	<i>Bus ride with the busses 214, 114 or 14 at 14.57, 15.08 or 15.06 from the bus stop philosophic institute ("Philosophisches Institut")</i>		
<b>ALL Groups: Field visits to providers of adult and continuing education in Würzburg</b>			
15.30-17.00	<span style="color: blue;">●</span> Volkshochschule (Adult Education Centre) Würzburg and Surroundings e.V., Würzburg Meeting point: 2nd floor at 14.50	PROF. GUIMARÃES	PLENARY ZOOM ROOM
	<span style="color: green;">●</span> Kolping Academy Mainfranken, Würzburg Meeting point: 1st floor at 14.50	PROF. EGETENMEYER	
	<span style="color: red;">●</span> Domschule Academy, Würzburg Meeting point: ground floor at 14.50	BEU	
Thursday, 8 February 2024			Room
9.00-10.00	Popular adult education and critical literacy: reading the world and reading the words	PROF. LIMA	Z6, 1.004
10.00-10.30	<i>Coffee break</i>		
10.30-11.45	Paulo Freire as public manager of education in the city of São Paulo: "Pedagogy of the city"	PROF. LIMA	Z6, 1.004
12.00-14.00	<i>Bus ride to Frankfurt &amp; Nürnberg</i>		
<b>ALL GROUPS: Field visits to adult education providers beyond Würzburg</b>			
14.00-16.00	<span style="color: black;">●</span> Deutsche Bahn (German railway), Frankfurt Meeting point: Z6, 2nd floor at 12.00	PROF. LIMA	ZOOM ROOM TO BE ANNOUNCED
	<span style="color: grey;">●</span> Gewerkschaft Erziehung und Wissenschaft (Union Education and Science), Frankfurt Meeting point: Z6, 1st floor at 12.00	PROF. GUIMARÃES	
	<span style="color: white;">○</span> Volkshochschule (Adult Education Centre), Nürnberg Meeting point: Z6, ground floor at 12.00	PROF. EGETENMEYER	
16.00-18.30	<i>Free time in Frankfurt &amp; Nürnberg</i>		
18.30	<i>Bus ride back to Würzburg</i>		

## Week I: Paulo Freire, adult and permanent education



Friday, 9 February 2024

Room

9.00-10.30	The pedagogy of freedom: teaching and learning	PROF. LIMA	Z6, 1.004
10.30-11.00	<i>Coffee break</i>		
11.00-12.30	The pedagogy of freedom: teaching and learning	PROF. LIMA	Z6, 1.004
12.30-13.30	<i>Lunch break</i>		
<p><b>ALL GROUPS:</b>  <b>Field visits to international adult and continuing education associations</b></p>			
13.30-15.00	 <i>Esther Hirsch</i> — The role of Adult Education in International Development Cooperation - Position and strategies of DVV International (DVV International)	PROF. EGETENMEYER	Z6, 2.007 ZOOM ROOM STRATEGIES A
	 <i>Gina Ebner</i> — Herding cats: European advocacy for adult learning and education (EAEA)	PROF. GUIMARÃES	Z6, 2.011 ZOOM ROOM STRATEGIES B
	 <i>Katarina Popović</i> — Global governance in adult education policy - changes and perspectives (ICAE)	PROF. LIMA	Z6, 1.004 ZOOM ROOM
15.00-15.30	<i>Coffee break</i>		
15.30-17.00	Reflection of field visits in a freirian perspective	PROF. LIMA	Z6, 1.004

## The moderators and lecturers of week I



### Prof. Regina Egetenmeyer, Julius-Maximilian University Würzburg, Germany

Regina Egetenmeyer works on questions of lifelong learning, informal learning, and professionalisation in adult education and mobility for learning purposes. Since 2013, she holds the Professorship for Adult and Continuing Education at the University of Würzburg. She is a visiting Professor at the International Institute of Adult and Lifelong Education, New Delhi. Her research emphasis is on international comparative research in adult education and lifelong learning.

### Prof. Licínio C. Lima, University of Minho, Portugal

Licínio C. Lima is Professor of Sociology of Education and Educational Administration at the Department of Social Sciences of Education at the University of Minho. He was Head of Department (1998-2004), Head of the Unit for Adult Education (1984-2004), Director of the Research Centre for Education and Psychology (1994-1997) and Director of the PhD in Education. Various European and Brazilian universities hosted him as a guest professor. Further is he an author of many academic works, which are published in nineteen countries, including more than thirty books.



### Prof. Paula Guimarães, University of Lisbon, Portugal

Paula Guimarães, PhD, is an assistant professor at the Instituto de Educação, Universidade de Lisboa (Portugal) since 2012. She did her PhD on Education Policies, in adult education, and has been studying adult education policies established, implemented and assessed at national and international levels. Her main interests have been the link that might be established among different levels (mega, macro, meso and micro) of education policy conception and implementation.

## Week II: Comparative studies in adult education and lifelong learning



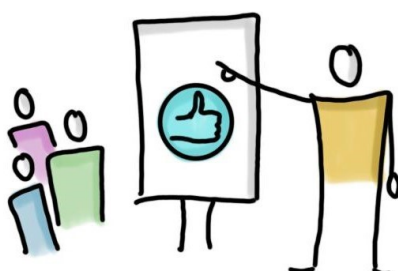
Prior to the Adult Education Academy, all master's and doctoral students prepare a transnational essay that is linked to the topic of the comparative group they choose to work in. The transnational essay will comprise the perspective on adult education in their home countries. The writing process will be guided on WueMahara moodle platform by the group moderators. Practitioners will hold their good practice presentation, which they have to submit prior to the Academy. The second week focuses on comparing the contexts and countries identified. The comparative group work will result in an open space presentation on Friday showing the results of the comparison.

### Room overview for the Comparative Groups (CG-rooms)

Comparative Group 1   Room: Z6, 2.007	Comparative Group 6   Room: Z6, 1.005
Comparative Group 2   Room: Z6, 2.006	Comparative Group 7   Room: Z6, 1.004
Comparative Group 3   Room: Z6, 2.005	Comparative Group 8   Room: Z6, 2.012
Comparative Group 4   Room: Z6, 2.004	Comparative Group 9   Room: Z6, 2.011
Comparative Group 5   Room: Z6, 2.003	AEA-Team Office   Room: Z6, 2.010

### Monday, 12 February 2024

			Room
9.00-10.30	Introduction into comparative adult education	PROF. EGETENMEYER	Z6, 1.012 PLENARY ZOOM ROOM
10.30-11.00	<i>Coffee break</i>		
11.00-12.30	Comparative group work: Introduction	IN GROUPS	CG-ROOMS
12.30-13.30	<i>Lunch break</i>		
13.30-15.00	Comparative group work: Participant presentations	IN GROUPS	CG-ROOMS
15.00-15.30	<i>Coffee break</i>		
15.30-17.00	Comparative group work: Participant presentations	IN GROUPS	CG-ROOMS
18.00	Cultural Evening	IN GROUPS	



## Week II: Comparative studies in adult education and lifelong learning



Tuesday, 13 February 2024			Room
9.00-10.30	Comparative group work: Participant presentations	IN GROUPS	CG-ROOMS
10.30-11.00	<i>Coffee break</i>		
11.00-12.30	Comparative group work	IN GROUPS	CG-Rooms
12.30-13.30	<i>Lunch break</i>		
13.30-15.00	Comparative group work	IN GROUPS	CG-ROOMS
15.00-15.30	<i>Coffee break</i>		
	Good practice presentations		
15.30-16.15	• <i>Daniela Padure</i> - Evolutions in adult learning and education public discourse - from narrow understanding to holistic approach (CG2)	DR. SINGH	Z6, 2.006
	• <i>Yuriy Petrushenko</i> - Civic education during the war: Experience of the Adult Education Centre in Sumy, Ukraine (CG3)	PROF. MIKULEC	Z6, 2.005
	• <i>Gali Sai'du</i> - Retirees life Adjustment Pattern for active ageing through Lens of Gerontological counsellors in Jigawa State, Nigeria (CG5)	PROF. BOFFO	Z6, 2.003
	• <i>Garba Mohammad Tofa</i> - Survey of the Effectiveness of Examination Strategies of the National Open University of Nigeria (NOUN) Study Centres (CG6)	PROF. HINZEN	Z6, 1.005
	• <i>Funmilayo Adewole</i> - Assessment of availability, access and utilisation of digital technologies for teaching and learning in adult education in Nigeria: a systematic review (CG7)	DR. JEAN FRANCOIS	Z6, 1.004
	Good practice presentations		
16.15-17.00	• <i>Damian Adebo and Olubunmi Olanipekun</i> - Functional agricultural education training programme: Panacea to life - long skills among teachers and learners in public primary school in Ekiti state, Nigeria (CG2)	DR. SINGH	Z6, 2.006
	• <i>Yana Drahoenko</i> - Active Aging in Ukraine: key Challenges and Perspectives (CG5)	PROF. BOFFO	Z6, 2.003
	• <i>Ige Lawrence</i> - Learning cities and adult education as sine-qua-non for adult learning in Nigeria (CG6)	PROF. HINZEN	Z6, 1.005
	• <i>Hayet Mehouchi</i> - Promoting the inclusion of women and young women in STEM education through a semio-didactic approach: A perspective on gender equality, rural inclusion, and adult education (CG8)	PROF. ALVES	Z6, 2.012

## Week II: Comparative studies in adult education and lifelong learning

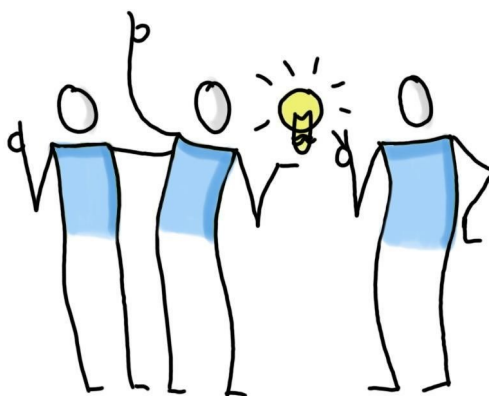


Wednesday, 14 February 2024			Room
9.00-10.30	Comparative group work	IN GROUPS	CG-ROOMS
10.30-11.00	<i>Coffee break</i>		
11.00-12.30	Comparative group work	IN GROUPS	CG-ROOMS
12.30-13.30	<i>Lunch break</i>		
13.30-15.00	Comparative group work	IN GROUPS	CG-ROOMS
15.00-15.30	<i>Coffee break</i>		
	Good practice presentations		
15.30-16.15	• <i>Rose Kando</i> - Social and cultural sustainability through Arts in societies: a comparative approach between young adults in Palestine and Denmark (CG6)	PROF. HINZEN	Z6, 1.005
	• <i>Rula Khayat</i> - Good practice of DVD International in promoting Adult Education in Palestine (CG7)	DR. JEAN FRANCOIS	Z6, 1.004
	• <i>Km Tanu</i> - Role of government policies to ensure gender equality in STEM in India (CG8)	PROF. ALVES	Z6, 2.012
	• <i>Meissa Ouerghi</i> - Towards an inclusive approach to assessment (CG9)	PROF. SCHREIBER-BARSCH	Z6, 2.011
	Good practice presentations		
16.15-17.00	• <i>Lima Momandi</i> - TO BE ANNOUNCED		
	• <i>Emma Yazyan</i> - Basics of Adult Learning and Education. Teaching Methodology (CG6)	PROF. HINZEN	Z6, 1.005
	• <i>Mohammad Alsheyab</i> - Digital reach for the marginalized during COVID (CG7)	DR. JEAN FRANCOIS	Z6, 1.004
	• <i>Rahul Yadav</i> - Women Empowerment in independent India (CG8)	PROF. ALVES	Z6, 2.012
17.00-17.30	Information on examination and grading possibilities	PROF. EGETENMEYER	Z6, 1.012 PLENARY ZOOM ROOM

## Week II: Comparative studies in adult education and lifelong learning



Thursday, 15 February 2024			Room
9.00-10.30	Comparative group work	IN GROUPS	CG-ROOMS
10.30-11.00	<i>Coffee break</i>		
11.00-12.30	Comparative group work	IN GROUPS	CG-ROOMS
12.30-13.30	<i>Lunch break</i>		
13.30-15.00	Comparative group work	IN GROUPS	CG-ROOMS
15.00-15.30	<i>Coffee break</i>		
15.30-17.00	Comparative group work	IN GROUPS	CG-ROOMS
17.00-17.30	Information about the possibility of publication (doctoral students and practitioners)	PROF. EGETENMEYER PROF. MIKULEC	Z6, 1.012 PLENARY ZOOM ROOM



## Week II: Comparative group presentations



Friday, 16. February 2024			ROOM
9.00-9.15	Welcome to the group presentation	PROF. EGETENMEYER	Z6, 1.012 PLENARY ZOOM ROOM
9.15-10.40	Presentations of results of comparative groups 1, 2 & 3		
9.15-9.40	Comparative group 1 — Audience: groups 4 & 5		Z6, 2.007
	Comparative group 2 — Audience: groups 6 & 7		PLENARY ZOOM   Z6, 2.006
	Comparative group 3 — Audience: groups 8 & 9		Z6, 2.005
9.45-10.10	Comparative group 1 — Audience: groups 8 & 9		Z6, 2.007
	Comparative group 2 — Audience: groups 4 & 5		Z6, 2.006
	Comparative group 3 — Audience: groups 6 & 7		PLENARY ZOOM   Z6, 2.005
10.15-10.40	Comparative group 1 — Audience: groups 6 & 7		PLENARY ZOOM   Z6, 2.007
	Comparative group 2 — Audience: groups 8 & 9		Z6, 2.006
	Comparative group 3 — Audience: groups 4 & 5		Z6, 2.005
10.40-11.10	<i>Coffee break</i>		
11.10-12.35	Presentations of results of comparative groups 4, 5 & 9		
11.10-11.35	Comparative group 4 — Audience: groups 1 & 2		Z6, 2.004
	Comparative group 5 — Audience: groups 6 & 7		PLENARY ZOOM   Z6, 2.003
	Comparative group 9 — Audience: groups 3 & 8		Z6, 2.011
11.40-12.05	Comparative group 4 — Audience: groups 3 & 8		Z6, 2.004
	Comparative group 5 — Audience: groups 1 & 2		Z6, 2.003
	Comparative group 9 — Audience: groups 6 & 7		PLENARY ZOOM   Z6, 2.011
12.10-12.35	Comparative group 4 — Audience: groups 6 & 7		PLENARY ZOOM   Z6, 2.004
	Comparative group 5 — Audience: groups 3 & 8		Z6, 2.003
	Comparative group 9 — Audience: groups 1 & 2		Z6, 2.011
12.35-13.35	<i>Lunch break</i>		
13.35-15.00	Presentations of results of comparative groups 6, 7 & 8		
13.35-14.00	Comparative group 6 — Audience: groups 1 & 2		ZOOM ROOM CG 6   Z6, 1.005
	Comparative group 7 — Audience: groups 3 & 4		ZOOM ROOM CG 7   Z6, 1.004
	Comparative group 8 — Audience: groups 5 & 9		Z6, 2.012
14.05-14.30	Comparative group 6 — Audience: groups 5 & 9		ZOOM ROOM CG 6   Z6, 1.005
	Comparative group 7 — Audience: groups 1 & 2		ZOOM ROOM CG 7   Z6, 1.004
	Comparative group 8 — Audience: groups 3 & 4		Z6, 2.012
14.35-15.00	Comparative group 6 — Audience: groups 3 & 4		ZOOM ROOM CG 6   Z6, 1.005
	Comparative group 7 — Audience: groups 5 & 9		ZOOM ROOM CG 7   Z6, 1.004
	Comparative group 8 — Audience: groups 1 & 2		Z6, 2.012
15.00-15.30	<i>Coffee break</i>		
15.30-16.15	Evaluation	IN GROUPS	CG-ROOMS
16.15-17.00	Closing session	PROF. EGETENMEYER	Z6, 1.012 PLENARY ZOOM ROOM
18.00	Franconian evening Meeting point: Theaterstraße 19, Würzburg at 18.00 You can get there by taking the busses 14, 114 or 214, all departing from the philosophic institute		BÜRGERSPITAL



## Comparative groups overview



Topic	Moderators
<b>Group 1 (on-site):</b> Trajectories of women's career in Higher Education	<i>Dr. Joellen Coryell, Texas State University, United States of America</i> <i>Dr. Concetta Tino, University of Padua, Italy</i>
<b>Group 2 (on-site):</b> Transitions from Sectors of Adult Education to Systems of Lifelong Learning	<i>Dr. Paed. Søren Ehlers, University of Science &amp; Technology, Meghalaya, India</i> <i>Dr. Shalini Singh, University of Science &amp; Technology, Meghalaya, India</i> <i>Dr. Séamus Ó Tuama, University College Cork</i>
<b>Group 3 (on-site):</b> Adult education for active democratic citizenship	<i>Prof. Borut Mikulec, University of Ljubljana, Slovenia</i> <i>Taiwo Isaac Olatunji, University of Padua, Italy</i>
<b>Group 4 (on-site):</b> Adult learning and education and logics of action: adult educators initial higher education paths	<i>Prof. Paula Guimarães, University of Lisbon, Portugal</i> <i>Dr. Lisa Breitschwerdt, Julius-Maximilians-Universität Würzburg, Germany</i> <i>Prof. Lucas Pacheco Campos, Federal University of Juiz de Fora, Brazil</i>
<b>Group 5 (on-site):</b> Competences for Active ageing – Life Skills, professional bio, professionalization	<i>Prof. Vanna Boffo, University of Florence, Italy</i> <i>Prof. Fabio Togni, University of Florence, Italy</i>
<b>Group 6 (online &amp; on-site):</b> Citizenship Education (CE) and Education for Sustainable Development (ESD) in a lifelong learning perspective: arguments, examples and experiences	<i>Prof. Balázs Németh, University of Pécs, Hungary</i> <i>Prof. Heribert Hinzen, University of Pécs, Hungary</i>
<b>Group 7 (online &amp; on-site):</b> Digitalisation in adult education and learning	<i>Prof. Emmanuel Jean Francois, Ohio University, United States of America</i> <i>Dr. Therese Rosemann, Helmut-Schmidt-University Hamburg, Germany</i>
<b>Group 8 (on-site):</b> Adult education policies and gender equality: women in STEM education	<i>Prof. Natália Alves, University of Lisbon, Portugal</i> <i>Ana Guimarães Duarte, University of Lisbon, Portugal</i>
<b>Group 9 (on-site):</b> Adult learning and education for all?! Issues of inclusion with regard to disability in the limelight	<i>Prof. Silke Schreiber-Barsch, University of Duisburg-Essen, Germany</i> <i>Lukas Eble, University of Duisburg-Essen, Germany</i>

## Comparative groups moderators



### Comparative Group 1: Trajectories of women's career in Higher Education

on-site



**Dr. Concetta Tino, University of Padova, Italy**

Concetta Tino, PhD, currently, she is an adjunct professor in Continuing Education and teach in different courses of master and bachelor's degree at University of Padua. Her research interests are teachers professional development, work-related learning, formative assessment and feedback, the development of soft skills and professional competences for students and teachers within work-related learning experiences and women leadership. She published many articles, books and chapters.

**Dr. Joellen Coryell, Texas State University, United States of America**

Joellen E. Coryell, PhD, is Associate Dean for Educational Partnerships and Enrollment for the College of Education and Professor of Adult, Professional, and Community Education in the Department of Counseling, Leadership, Adult Education, and School Psychology at Texas State University. She holds a PhD in educational human resource development and adult education from Texas A&M University. Across her career, she worked in executive business management and corporate training, in faculty development for learning and teaching, and as program director for master's and doctoral programs in two universities. In her current role as Associate Dean, she provides direction for creating and sustaining educational partnerships in the public and private sectors.

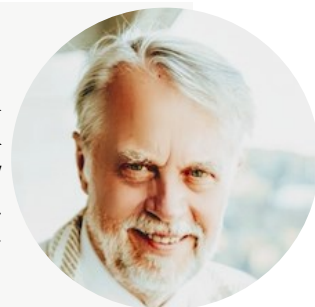


### Comparative Group 2: Transitions from Sectors of Adult Education to Systems of Lifelong Learning

on-site

**Prof. Søren Ehlers, University of Science & Technology, Meghalaya, India**

Søren Ehlers, PhD, is Chairman at the Center for Lifelong Learning, University of Science & Technology, Meghalaya and Distinguished Professor at the International Institute for Adult & Lifelong Education, India. He has been teaching and doing research at Aarhus University Denmark and in other Danish institutions and has been travelling widely for the same, all over the globe and has many publications and projects to his credit including the first Masters in Lifelong Learning (MALL) in Europe.



**Dr. Shalini Singh, University of Science & Technology, Meghalaya, India**

Shalini Singh, PhD, is Director at the Center for Lifelong Learning, University of Science & Technology, Meghalaya, India and Policy Analyst at the Center for Policy Analysis, India. Currently, she is a Visiting Researcher at the Helmut Schmidt University of the Federal Armed Forces. As a senior consultant for PLC Advocates, India, she works for the Prevention of Sexual Harassment at Workplace.



## Comparative groups moderators



### Co-Moderator: Prof. Séamus Ó Tuama, University College Cork, Ireland

Séamus Ó Tuama, PhD, is Director of Adult Continuing Education and an academic in the School of Government & Politics at University College Cork, Ireland. He is also an Adjunct Professor at the University of Science & Technology Meghalaya, India. He is Chair of the ASEM Lifelong Learning Hub, which aims to shape the direction of lifelong learning research, policy and practice of the ASEM community. ASEM (Asia-Europe Meeting) is an inter-governmental process established in 1996 to foster dialogue and cooperation between Asia and Europe. ASEM comprises 53 partners: 30 European and 21 Asian countries, the European Union, and the ASEAN Secretariat.



## Comparative Group 3: Adult education for active democratic citizenship

on-site



### Prof. Borut Mikulec, University of Ljubljana, Slovenia

Prof. Borut Mikulec, PhD, is associate professor of adult and continuing education at the Department of Educational Sciences at the University of Ljubljana. His research areas include the role of transnational organisations in education policy, international and comparative adult education, the policy in adult education, professionalisation of adult educators, continuing vocational education and training, and citizenship education.

### Co-Moderator: Taiwo Isaac Olatunji, University of Padua, Italy

Taiwo Isaac Olatunji is a doctoral candidate in Pedagogical, Educational and Training Sciences at the University of Padua (Padova), Italy. His doctoral research project explores how cross-cultural transition results in transformative learning among Nigerian immigrants in Italy and the USA. Taiwo was recently a Visiting Research Scholar in Adult, Professional, and Community Education at Texas State University, San Marcos, USA. He is an alumnus of Obafemi Awolowo University, Ile-Ife, Nigeria and an Erasmus+ Alumnus of Julius-Maximilians-University Wuerzburg, Germany.



## Comparative groups moderators



### Comparative Group 4: Adult learning and education and logics of action: adult educators initial higher education paths

on-site



#### Prof. Paula Guimarães, University of Lisbon, Portugal

Paula Guimarães, PhD, is an assistant professor at the Instituto de Educação, Universidade de Lisboa (Portugal) since 2012. She did her PhD on Education Policies, in adult education, and has been studying adult education policies established, implemented and assessed at national and international levels. Her main interests have been the link that might be established among different levels (mega, macro, meso and micro) of education policy conception and implementation.

#### Dr. Lisa Breitschwerdt, Julius-Maximilians University of Würzburg, Germany

Lisa Breitschwerdt, PhD, is a research assistant at the Professorship of Adult and Continuing Education at the Julius-Maximilians-University of Würzburg. She works on digitalisation and professionalisation in adult and higher education, didactics and methods of teaching and learning and dialogical perspectives in adult education research.



#### Co-Moderator: Prof. Lucas Pacheco Campos, Federal University of Juiz de Fora Brazil

Lucas Campos was an assistant professor at the Federal University of Juiz de Fora (Brazil) since 2018 up to 2024. He did his PhD on Public Policies and Human Development at Universidade do Estado do Rio de Janeiro (Brazil), in partnership with the Instituto de Educação, Universidade de Lisboa (Portugal). His main research interests are linked with policies, public administration and organizational studies. In this field, he has been reflecting on the relationships between the State, civil society and educational public policies.



### Comparative Group 5: Competences for Active ageing – Life Skills, professional bio, professionalization

on-site

#### Prof. Vanna Boffo, University of Florence, Italy

Vanna Boffo, PhD, is Professor of Adult Education and LifeLong Learning and Dean of the Department of Education, Languages, Intercultures, Literatures and Psychology at the University of Florence. She is Coordinator of the Doctoral Course in Educational and Psychological Sciences. She served as Vice-President for the *Italian University Network for Permanent Learning* (RUIAP) associate EUCEN. She is Director (with Paolo Federighi) of the Book Series *Studies on Adult Learning and Education*, Firenze University Press and the Director of the *EPALE Journal on Adult Learning and Continuing Education*.



## Comparative groups moderators



### Co-moderator: Prof. Fabio Togni , University of Florence, Italy

Prof. Fabio Togni, PhD, is Professor in General and Social Pedagogy at the Department of Education, Languages, Interculture, Literatures and Psychology, University of Florence, Italy. His research focuses on Philosophy of Education, Longevity and Quality Education at the Higher Education level.

online &  
on-site

## Comparative Group 6: Citizenship Education (CE) and Education for Sustainable Development (ESD) in a lifelong learning perspective: arguments, examples and experiences

### Prof. Balázs Németh, University of Pécs, Hungary



Balázs Németh, PhD, is a researcher on European adult and lifelong learning policy development and comparative adult education. He is an associate professor and reader in Adult Learning and Education at the University of Pécs. He is also a founding member of the Hungarian Universities Lifelong Learning Network (MELLearn) and represents the University of Pécs in the European Universities Continuing Education Network (EUCEN) and in the European Association for the Education of Adults (EAEA). Balázs Németh is President and member of Steering Committee of EUCEN for 2021-23 period being responsible for policy affairs and talks. He is a vice-Director of PASCAL International Observatory for Central-East Europe, Executive President of MELLearn and the current president of the Adult Education Sub-Commission of the Hungarian Academy of Sciences.

### Prof. Heribert Hinzen, University of Pécs, Hungary

Prof. Heribert Hinzen, PhD., is a senior consultant on adult education and lifelong learning for sustainable development. He worked for DVV International for almost four decades, both in headquarters and in offices in Sierra Leone, Hungary and Lao PDR. He is an Honorary Professor at the University of Pécs, and teaches comparative adult education at the University of Würzburg. He has served as Vice-President of the ICAE and the EAEA, and is currently Vice-President of the global network for Promoting, Interrogating and Mobilising Adult learning and education (PIMA). He was a member of the CONFINTEA VI Consultative Group, the UN Literacy Decade Expert Group, and a delegate to the World Education Fora of 2000 and 2015. He is an Honorary Fellow of the UNESCO Institute for Lifelong Learning (UIL) and a member of the Editorial Board of the International Review of Education – Journal of Lifelong Learning.



## Comparative groups moderators



### Comparative Group 7: Digitalisation in adult education and learning

online &  
on-site

**Prof. Emmanuel Jean Francois, Ohio University, United States of America**

Dr. Emmanuel Jean Francois is Associate Professor of Comparative and International Education at Ohio University. He is the Coordinator of the Doctoral program in Educational Administration/Leadership, as well as the doctoral specialisation in Comparative and International Educational Leadership.



**Co-Moderator: Dr. Therese Rosemann, Helmut Schmidt University Hamburg, Germany**

Therese Rosemann, PhD, is a research associate at the Professorship for Continuing Education and Lifelong Learning at the Helmut-Schmidt-University Hamburg. She conducts research on learning activities in informal and non-formal learning contexts in vocational and university contexts. A special focus of her research is the implementation of process-related survey methods (esp. diary studies). In the course of her doctoral studies in the field of business education and human resource development at the University of Göttingen (Germany), she identified factors influencing the perception of learning situations of employees in nursing professions. Since May 2021, she has been working in the research project "Digital Key Competencies for Study and Work". The focus of her work is the identification of (digital) learning activities and complexes of students.



on-site

### Comparative Group 8: Adult education policies and gender equality: women in STEM education

**Prof. Natália Alves, University of Lisbon, Portugal**

Prof. Natália Alves, PhD., is an associate professor at the Institute of Education, University of Lisbon. She holds a PhD. on Sociology of Education. Her main fields of research are school to work transitions and IVET and CVET policies, forms of provision, and practices.



**Co-moderator: Ana Guimarães Duarte, M.Sc. University of Lisbon, Portugal**

Ana Guimarães Duarte is a PhD student at Adult Education at Institute of Education, University of Lisbon. She has worked as project manager and adult educator in vocational and community education. Ana Guimaraes Duartes current research interests include: experiential learning, learning trajectories of migrant women, vocational education, IVET STEM courses and gender and school-to-work transitions.



## Comparative groups moderators



### Comparative Group 9: Adult learning and education for all?! Issues of inclusion with regard to disability in the limelight

on-site

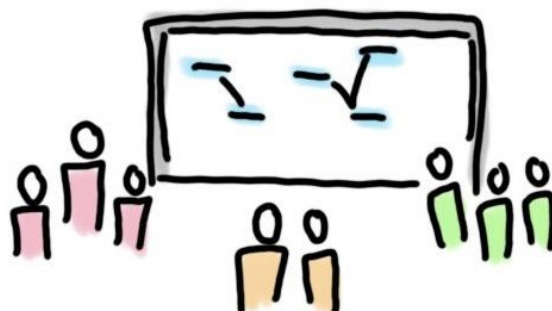
#### Prof. Silke Schreiber-Barsch, University of Duisburg-Essen, Germany

Silke Schreiber-Barsch, PhD, is Professor in Adult Education at the University of Duisburg-Essen, Germany. Moreover, she has been appointed as Research Associate at the Centre for Higher and Adult Education, Stellenbosch University, South Africa. Her research focuses on international and comparative adult education, lifelong learning, issues of participation and social inclusion/exclusion, global citizenship education and sustainability and adult education and disability.



#### Co-Moderator: Lukas Eble, University Duisburg-Essen, Germany

Lukas Eble is a researcher at the Professorship for Adult Education at University of Duisburg-Essen. His core expertise are societal-critical and social psychological theories and approaches in Educational Science and Adult Education. His current research focuses on the conceptualisation of solidarity in adult education from the perspective of the philosophy of practice.



## Certification and follow-up

### Participation certificate and grading possibilities

After successfully participating in the Adult Education Academy and completing a transnational essay, students receive a certificate of attendance (10 ECTS). All formally registered students can opt to participate in an examination for receiving a formal transcript including a grade (15 ECTS).

Participation is considered successful after **attending the complete programme** and either **submitted a transnational essay and passed the plagiarism check (master's and doctoral students)** or **if you gave a good practice presentation during the Academy (practitioners)**.

Please be aware that **participation is only possible if you complete the preparations during the preparation phase and attend the full programme**, which starts on 5 February 2024, 8:00 am CET and ends on 16 February 2024 at 5:00 pm CET. In exceptional cases, which will be considered individually, it is possible to receive individual certificates for one of the two weeks or a good practice presentation.

#### Option 1 (10 ECTS)

Participation in the online preparatory phase + full attendance at the Academy in february

Submission of a transnational essay

#### Option 2 (15 ECTS + grade)

Participation in the online preparatory phase + full attendance at the Academy in february

Submission of a transnational essay

Submission of the transnational essay for grading and a plagiarism check

### Publication option

Doctoral students and practitioners have the option to get guidance for publishing a joint comparative paper together with their comparative group moderators after the Adult Education Academy. Further information for those interested in this option will be provided during the Adult Education Academy.





## Join us on social media

# #AEAcademyWue

### LinkedIn Network

The LinkedIn Network for adult education and lifelong learning is one of several features of the annual Adult Education Academy. Our aim is to connect students, researchers, experts and professors interested in adult education and lifelong learning. We offer two LinkedIn groups: an “internal group” and a “professional network”. As a (future) participant with a LinkedIn account, we invite you to join both the internal group and the professional network.



### The “Professional network for adult education and lifelong learning”

As a larger platform, the professional network is an extension of the internal group for professionals, whose jobs, studies or interests link them to adult education and lifelong learning. For this reason, we have set up our public LinkedIn group for participants from all former Adult Education Academies and also for professionals working in the field. Not only will you be able to connect with fellow students and professionals, you will also get information about international conferences, fellowships/scholarships, research projects, recently published papers, calls for papers, professional newsletters, online presentations and, of course, member’s thoughts about various topics in adult education and lifelong learning. This group already has over 1400 members from all over the world.

### The “Adult Education Academy 2024” group

In addition, each year’s Adult Education Academy has its own internal group to allow students and professors to connect with each other and build their own community, both before and after the Adult Education Academy. Apart from conversations, we also upload Adult Education Academy news and reminders, information and photos. After the Adult Education Academy term, we use the group to share ideas and events related to Adult Education Academy topics. The Adult Education Academy groups are non-public.

Join our professional LinkedIn network

[go.uniwue.de/linkedin-network](https://go.uniwue.de/linkedin-network)

Be part of the internal AEA 2024 Group

[www.linkedin.com/groups/12825446/](https://www.linkedin.com/groups/12825446/)

## The Professorship for Adult and Continuing Education on Social Media

Follow us on Twitter (@EBWuerzburg) so you don’t miss any news regarding our Professorship. Use [#AEAcademyWue](#) when you tweet about your experiences in relation to the Adult Education Academy! We are looking forward to reading from you.



Follow us on Instagram (@ebwuerzburg)! In addition to the Twitter channel, we post information about the Chair of Adult/Continuing Education on our Instagram account. You can also reach us here for general questions via direct message.

## Travel & Venue

If you arrive by plane, we recommend the airports Nürnberg (NUE) and Frankfurt am Main (FRA). You can take the train (ca. 60 to 90 minutes) to get to Würzburg. When you decide for a transit flight, you might take the train from the cities Munich, Stuttgart, Augsburg and Hannover to Würzburg for your onward journey which is more comfortable and requires less time. If you come from outside Europe, it is better to plan your arrival at Frankfurt am Main. There are ICE-trains which go to Würzburg every hour (Duration ca. 1:30 hours). You can buy train tickets and check for their schedule and delays at the website of the Deutsche Bahn ([www.bahn.de](http://www.bahn.de)). If you fly with Lufthansa, we recommend to book Rail and Fly (around 58 Euro). With this ticket, you are able to take any train to Würzburg. This would help being flexible and avoid waiting times.

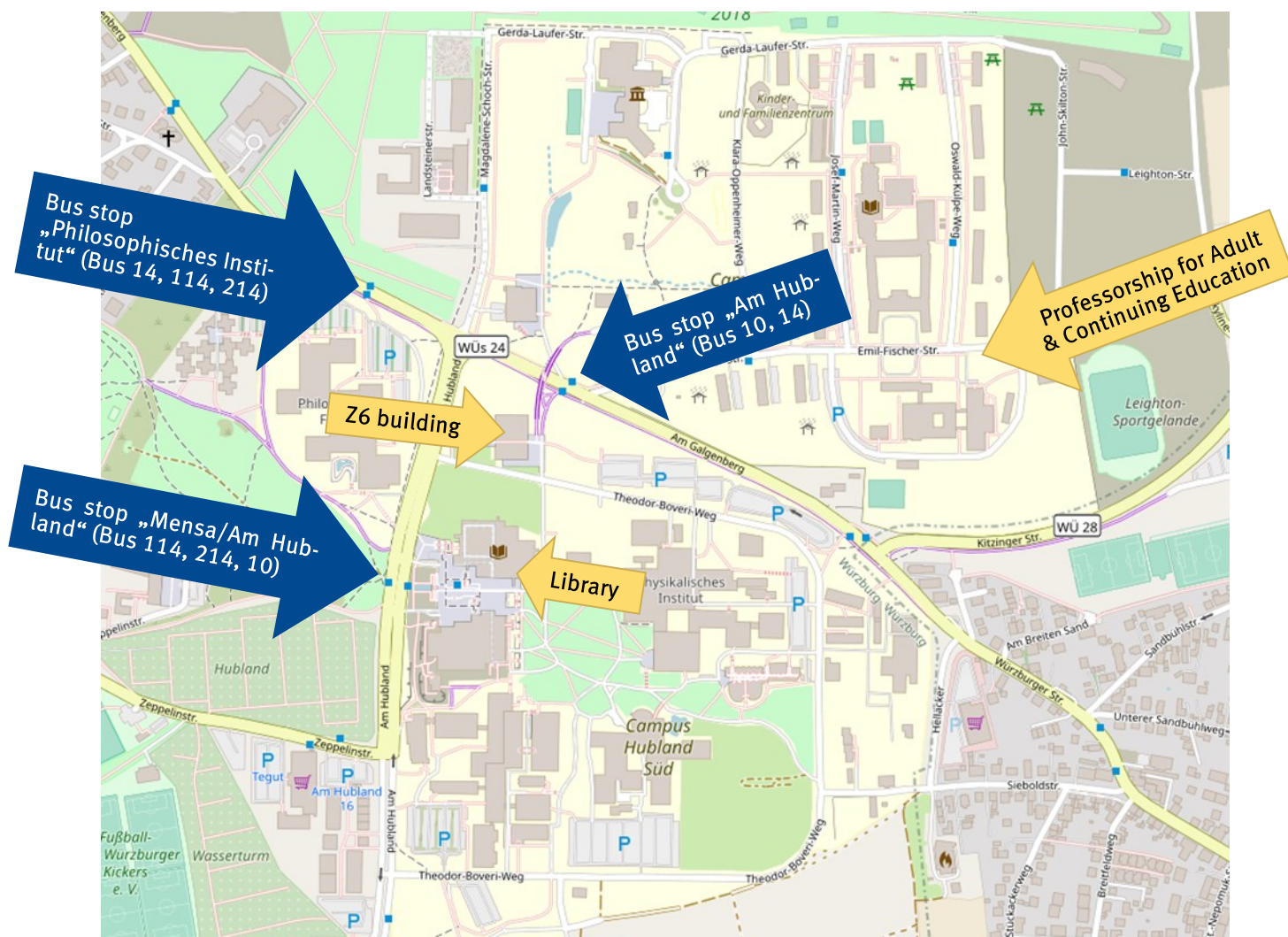
If you plan to arrive by bus, you can find various bus schedules at the following website: [www.busradar.com](http://www.busradar.com)



## Travel & Venue

### Venue

Zentrales Hörsaal- und Seminargebäude (Z6)  
University of Würzburg  
Am Hubland  
97074 Würzburg



© OpenStreetMap. This map is made available under the Open Database License: <http://opendatacommons.org/licenses/odbl/1.0/>. Any rights in individual contents of the database are licensed under the Database Contents License: <http://opendatacommons.org/licenses/dbcl/1.0/>

To get to the venue of the event, you can either take bus 10 that departs at “Sanderring” until “Am Hubland”, or bus 14 that departs at “Hauptbahnhof” (main train station) until “Am Hubland”. The duration for both bus connections is approx. 20min. On the right side of the bus stop you can see the building of “Zentrales Hörsaal- und Seminargebäude” (Z6). Furthermore, you can take the bus 114 that departs at “Hauptbahnhof” until “Hubland/Mensa” or bus 214 that departs at “Hauptbahnhof” until “Hubland/Mensa”. From both stops it’s only a few meters until “Zentrales Hörsaal- und Seminargebäude” (Z6 building).

Campus: [wueaddress.uni-wuerzburg.de/search/map?q=Geb.+Z6%2C+Hubland+S%C3%BCD](http://wueaddress.uni-wuerzburg.de/search/map?q=Geb.+Z6%2C+Hubland+S%C3%BCD)

Würzburg: [www.wuerzburg.de/de/weitere-informationen/uebersicht/verkehr/stadtplan/index.html](http://www.wuerzburg.de/de/weitere-informationen/uebersicht/verkehr/stadtplan/index.html)

## Accommodation

The Julius-Maximilian-University holds various hotel cooperation partners that enable you to use a reduced university guest fee. The hotel prices start at 69 EUR per night. In shared bed dorms prices start at 27 EUR per night. Furthermore, a detailed list of booking recommendations for youth hostels and guest houses in Würzburg will be send to you after your registration. Please consider that we cannot guarantee any free space or the named price. We recommend you to book an accommodation right after your registration.

Vacation apartments as well as B&Bs can be found at the website of Würzburg city:

<http://www.wuerzburg.de/en/visitors/more-acco/index.html>

Hotels can be found at the website of Würzburg city:

<http://www.wuerzburg.de/en/visitors/hotels-hostels/index.html>

## Key

### Groups of people



Master Students

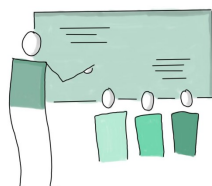


Doctoral Students



Practitioners

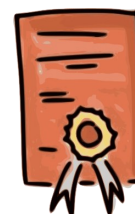
### AEAcademy phases



Week I



Week II

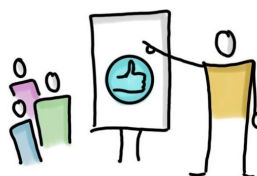


Certification &  
Follow up

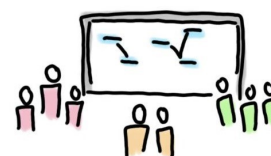
### Activities



Field visit



Good practice presentation



Comparative group presentation

## Which platforms are used?

### Catalogue University Library Würzburg

In the catalogue you will find books and other media that are printed or available electronically from us. At the same time, you can also search many databases and other sources for independent literature, such as articles from magazines. This literature is not always available with us.



[Searching the catalogue - University Library \(uni-wuerzburg.de\)](http://uni-wuerzburg.de)

### Outlook / Microsoft Exchange

You can retrieve the e-mail address that you receive from the university at any time without a special mail client from the browser (<name.surname>@stud-mail.uni-wuerzburg.de).



[JMU Mail \(uni-wuerzburg.de\)](http://uni-wuerzburg.de)

### WueCampus

WueCampus is the university-wide online learning platform that provides the learning content, the organisation of learning units and learning processes, and serves as a communication platform.



[WueCampus \(uni-wuerzburg.de\)](http://uni-wuerzburg.de)

### WueMahara

Mahara is an e-portfolio software with community functions. The system supports the documentation and reflection of the learning process and the learning outcomes.



[Startseite - Mahara \(uni-wuerzburg.de\)](http://uni-wuerzburg.de)

### WueStudy

WueStudy is the campus management system of the JMU and supports the entire student life cycle for all participants. On the platform you can find application management, student management, course management, event and room management and audit management.



[Startseite - WueStudy \(uni-wuerzburg.de\)](http://uni-wuerzburg.de)

### Zoom

Zoom Meetings is a video conferencing tool with recording and screen sharing features.



[Videokonferenzen, Web-Konferenzen, Webinare, Bildschirmfreigabe - Zoom](http://uni-wuerzburg.de)

## Team of the Adult Education Academy



***Prof. 'in Dr. Regina Egetenmeyer***

Head of the Professorship for Adult and Continuing Education



***Vanessa Beu, M.A.***

Contact for the Adult Education Academy programme



***Laura Leibinger, M.A.***

Contact for the Adult Education Academy programme



***Julia Saam, M.A.***

Contact for the Adult Education Academy programme



***Maren Toepler, M.A.***

Contact for ERASMUS+



***Dr. Lisa Breitschwerdt***

Contact for the Ault Education Academy programme

### Contact information

Julius-Maximilian University Würzburg  
Institute for Education  
Professorship for Adult and Continuing Education  
Oswald-Külpe-Weg 82  
97074 Würzburg, GERMANY

Phone.: +49 931-31 85226  
lifelonglearning@uni-wuerzburg.de  
www.lifelonglearning.uni-wuerzburg.de  
Twitter: EBWuerzburg  
Instagram: ebwuerzburg

### Venue

University of Würzburg  
Campus Hubland Nord  
97074 Würzburg

**We wish you all the best and stay healthy!**



## Adult Education Academy 2024

International and comparative studies  
in adult education and lifelong learning

All rights reserved.

Julius-Maximilian University Würzburg  
Institute for Education  
Professorship for Adult and Continuing Education  
Oswald-Külpe-Weg 82  
97074 Würzburg, GERMANY  
Tel.: +49 931-31 85226  
[lifelonglearning@uni-wuerzburg.de](mailto:lifelonglearning@uni-wuerzburg.de)  
[www.lifelonglearning.uni-wuerzburg.de](http://www.lifelonglearning.uni-wuerzburg.de)

A  
E  
A  
C  
A  
D  
E  
M  
Y  
-  
G  
U  
I  
D  
E